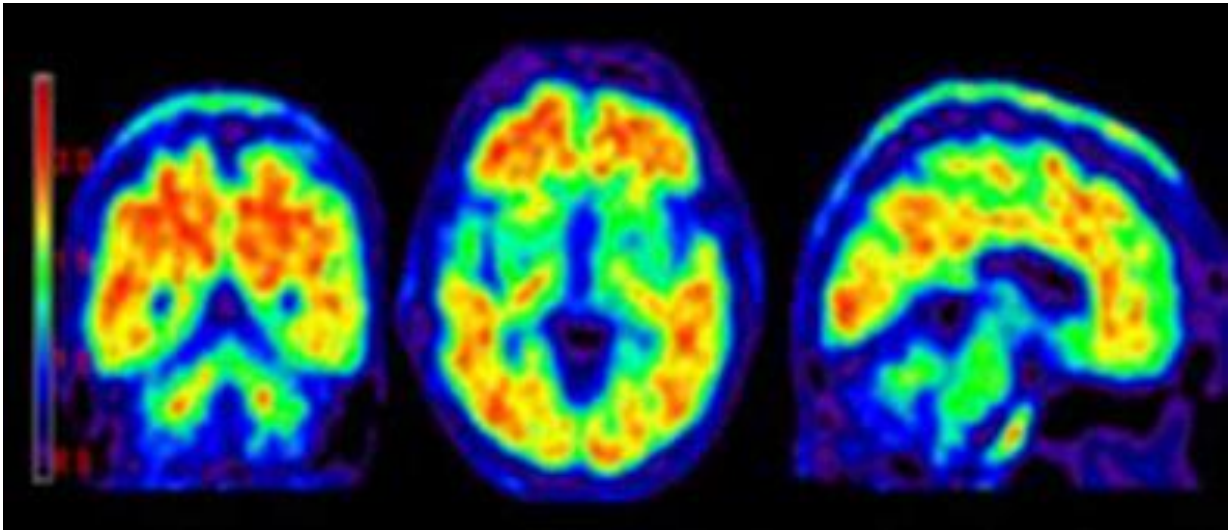
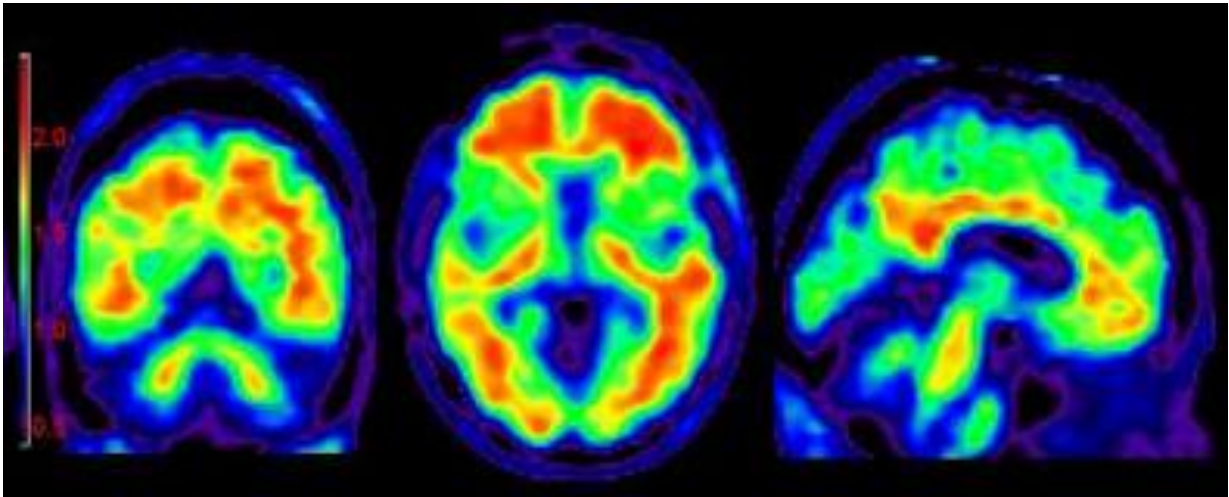


Which image shows Alzheimer's disease? Which image shows Mild Cognitive Impairment?
How could you tell?

A



B



A

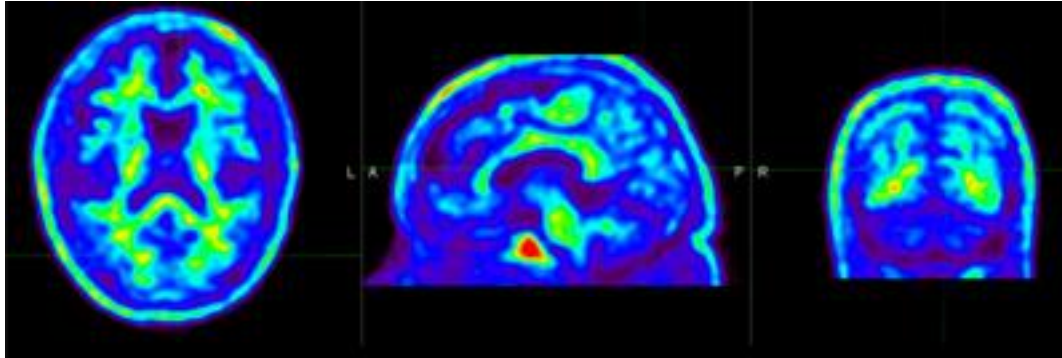
A β + AD

B

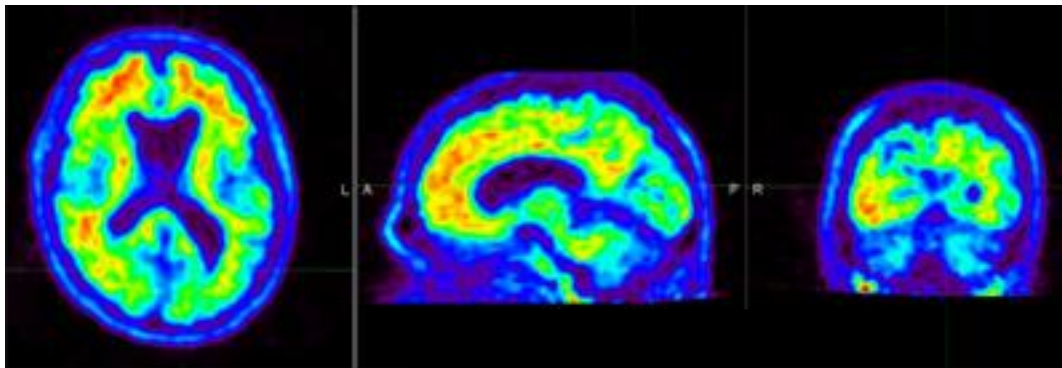
A β + MCI

Which image shows a positive scan for beta-amyloid? Which image shows a negative scan?
How could you tell?

A



B



A

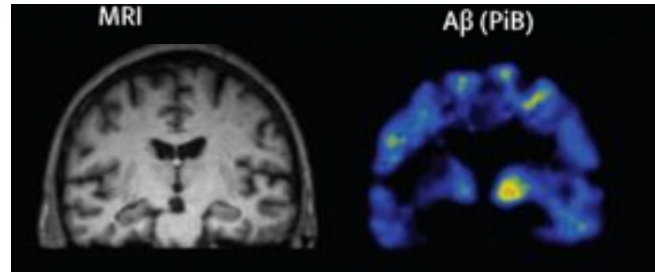
Negative Scan

B

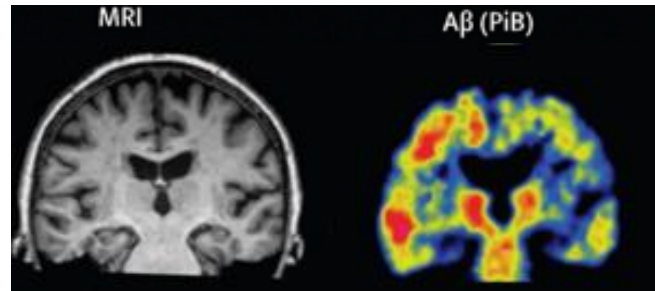
Positive Scan

Which image shows a healthy brain? Which image shows Mild Cognitive Impairment?
Which images shows Alzheimer's disease
How could you tell?

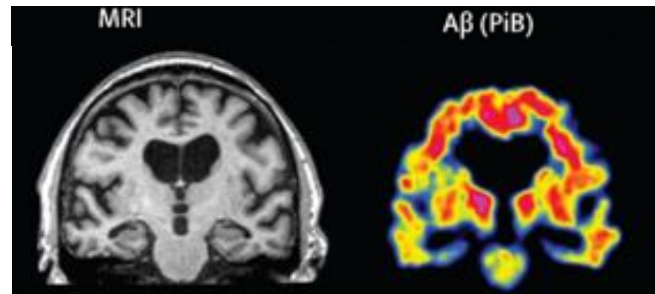
A



B



C



A

75-year-old
Normal
Amyloid-MMSE 30

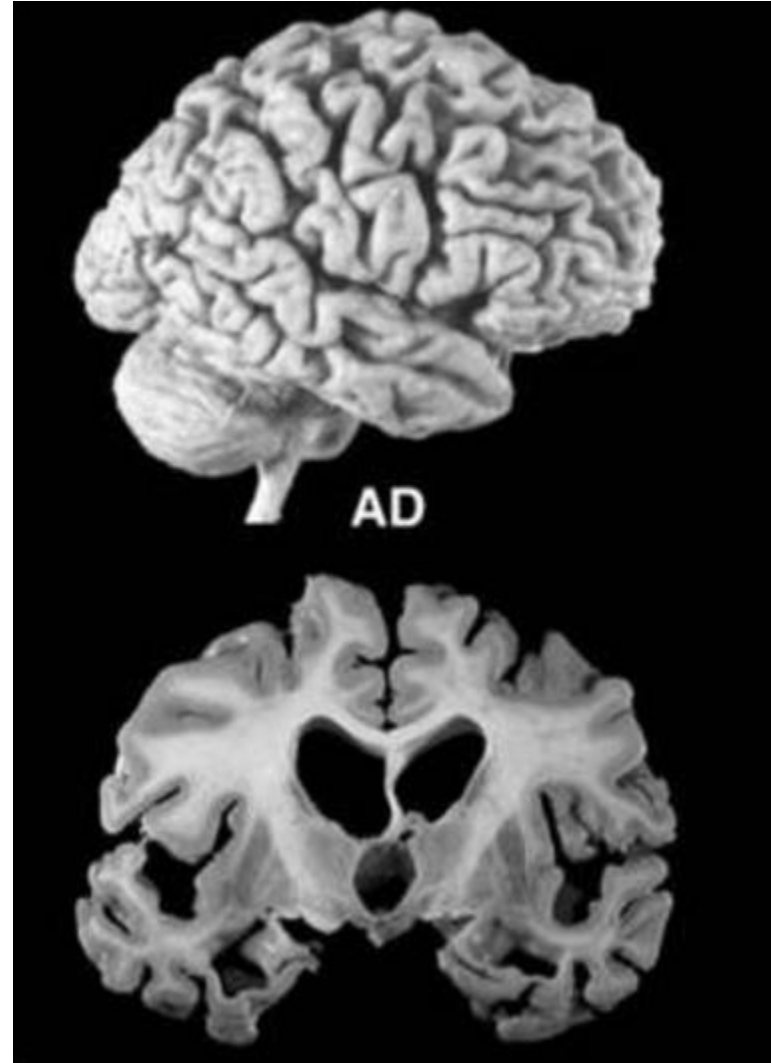
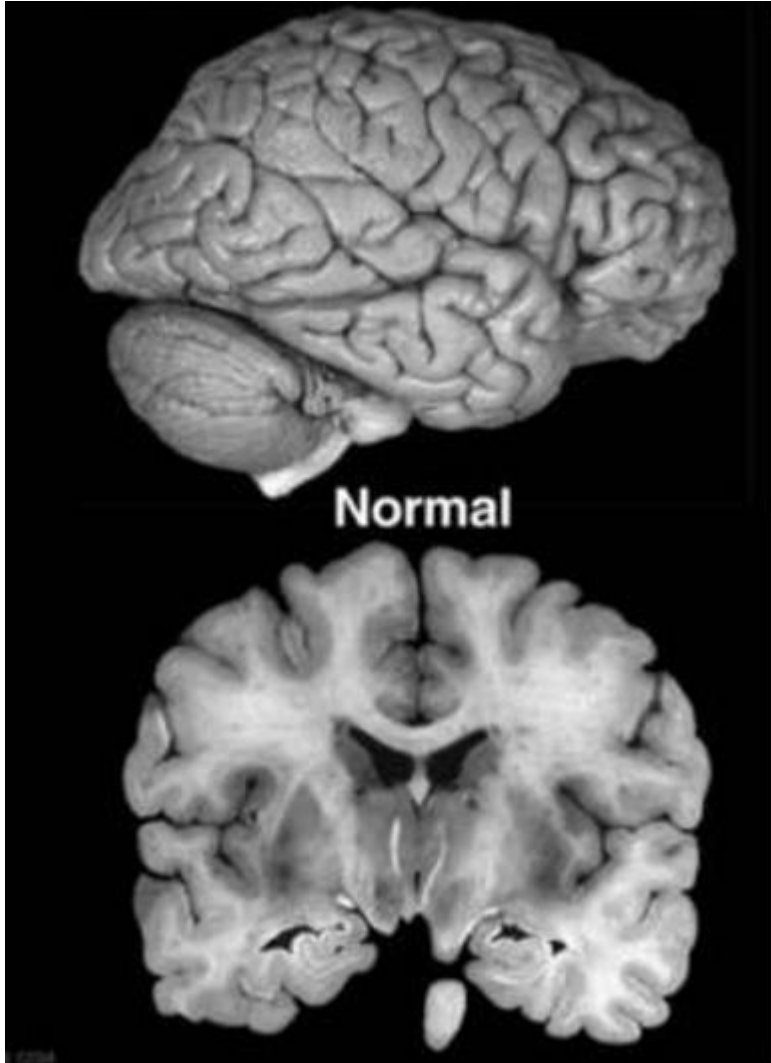
B

70-year-old
MCI
Amyloid + MMSE 26

C

68-year-old
AD dementia
Amyloid + MMSE 23

What differences can you find between the normal brain and the Alzheimer's disease brain?



Differences:

- Brain atrophy/shrinkage
- Ventricles (holes in center of brain which contains cerebral spinal fluid) are larger
- Less white matter